

LEWIS CARROLL'S

# ALICE

*in*  
WONDERLAND  
*Book Launch*

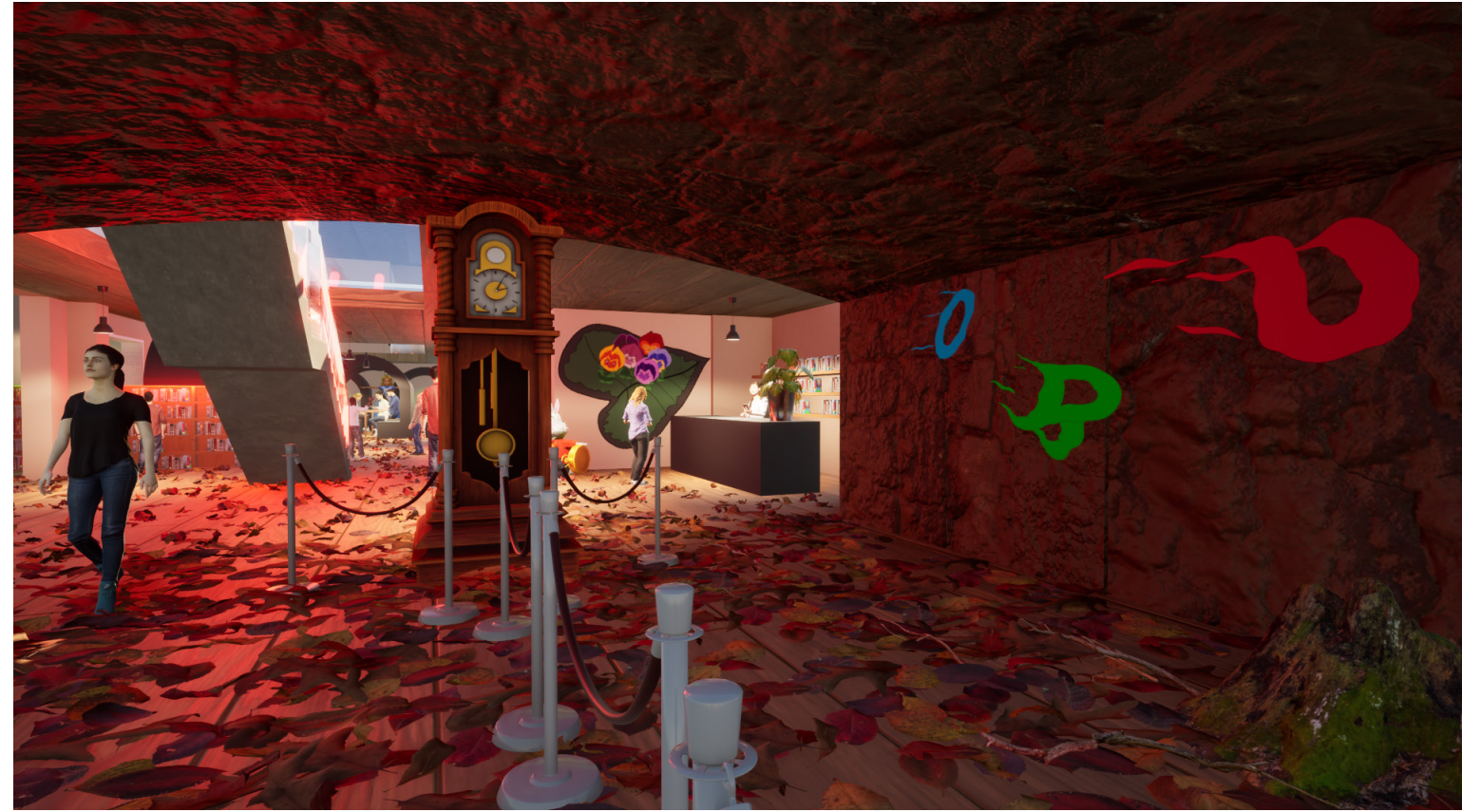
*Join ALICE and venture into the  
RABBIT HOLE and find out  
WHO YOU ARE*

WEDNESDAY 18TH  
JANUARY 2023  
9:00 AM - 10:00

*Where to find us-*  
321-314 BRADFORD  
STREET B5 6ET



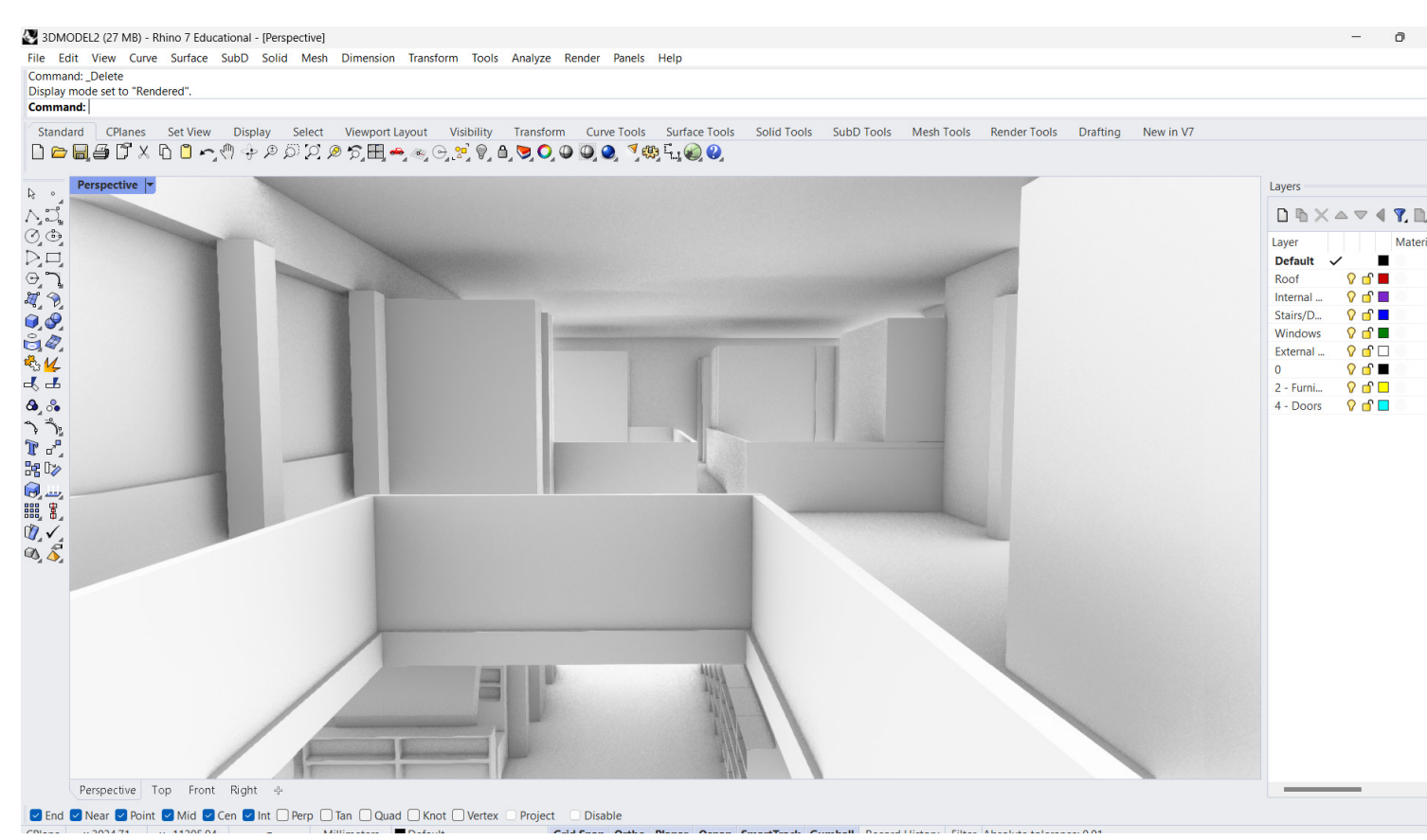
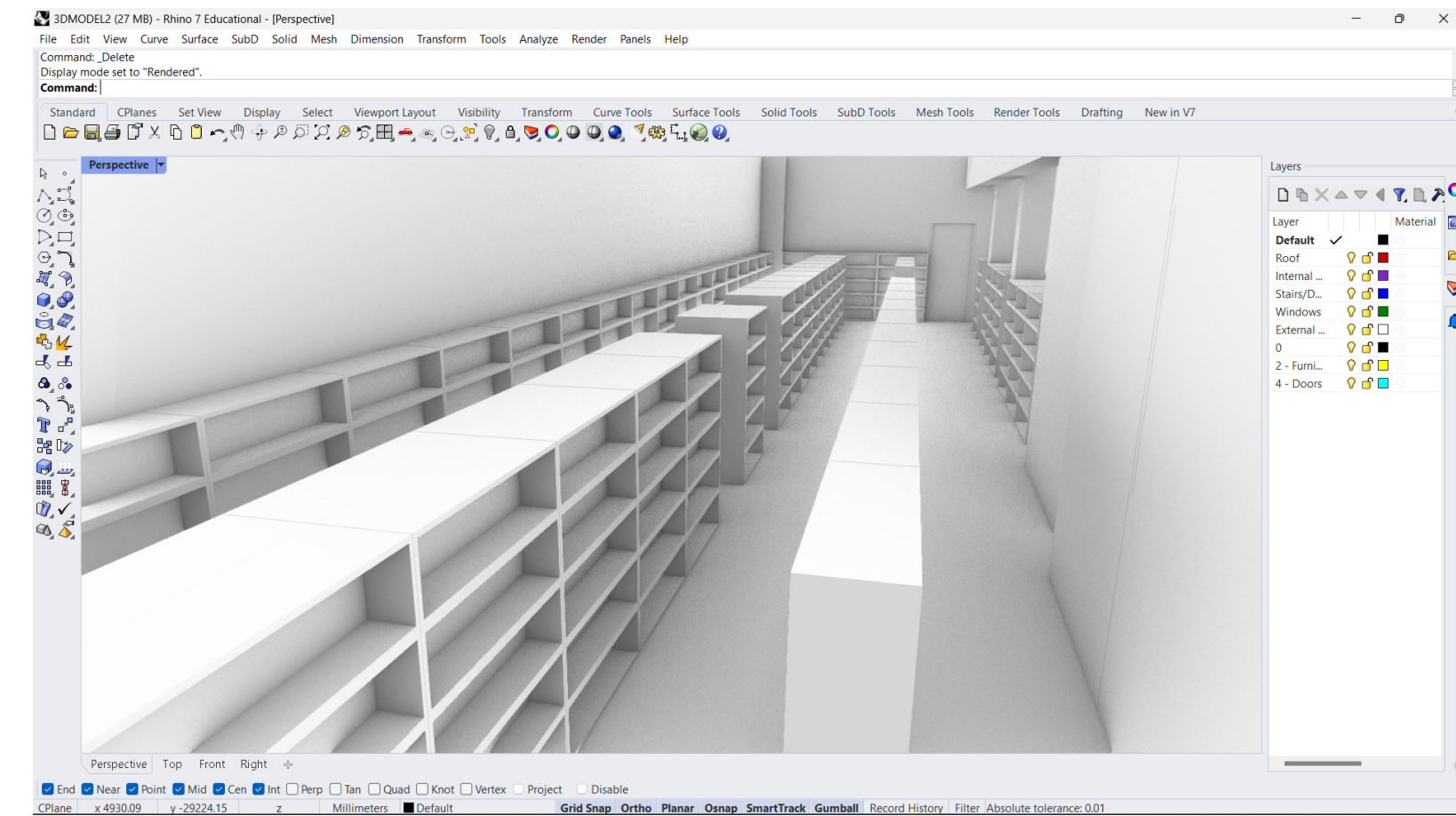
STORYBOARD



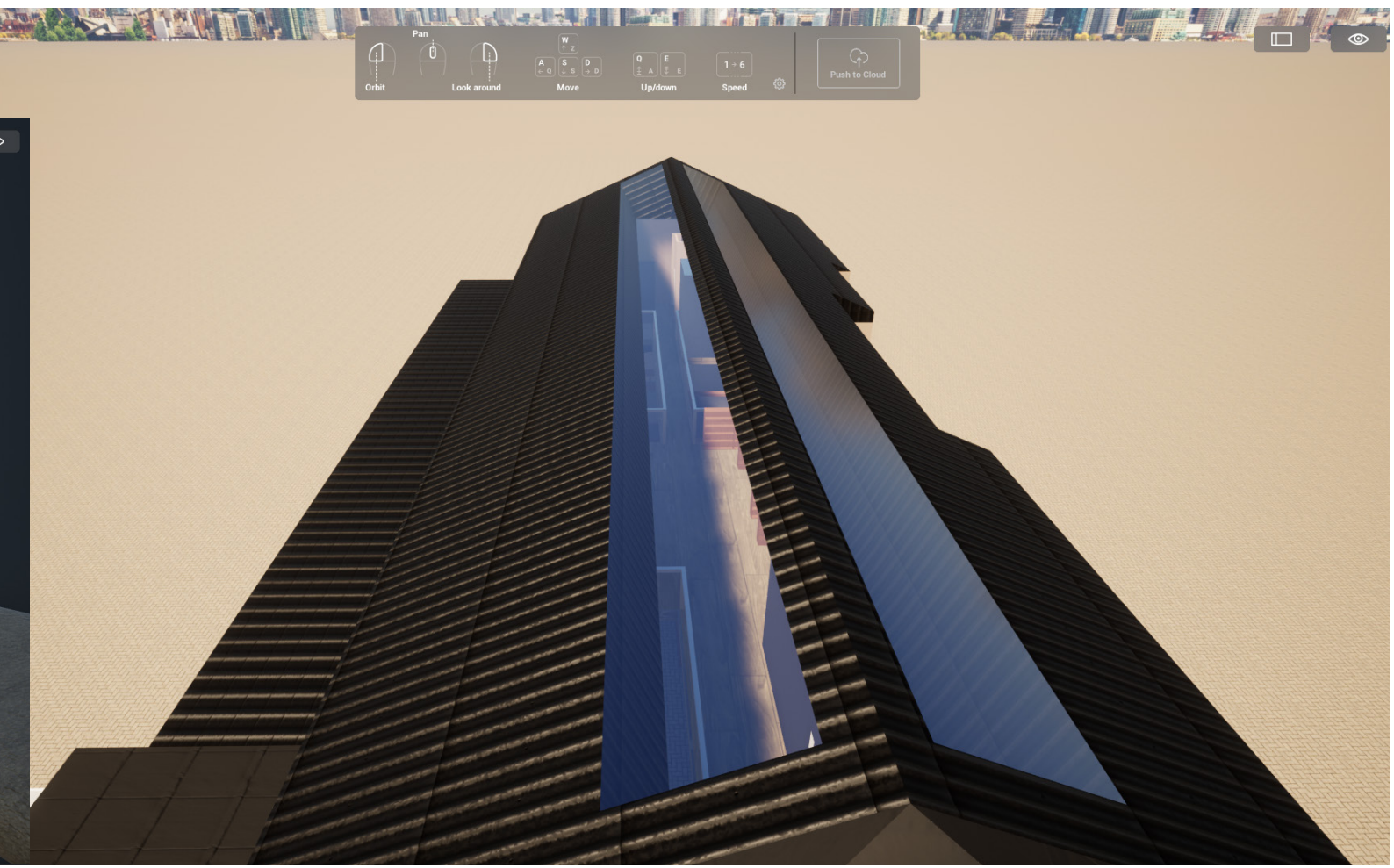
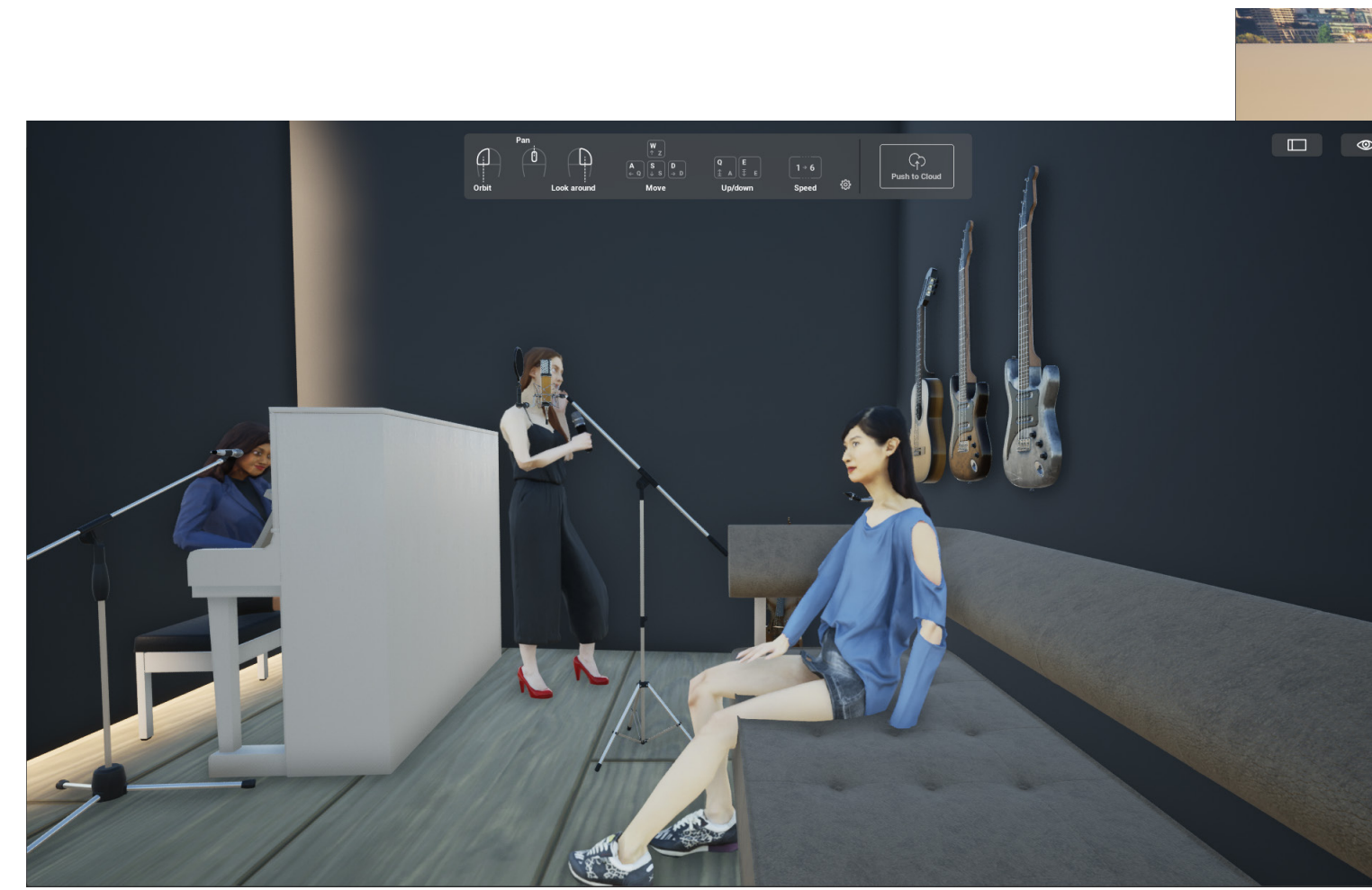
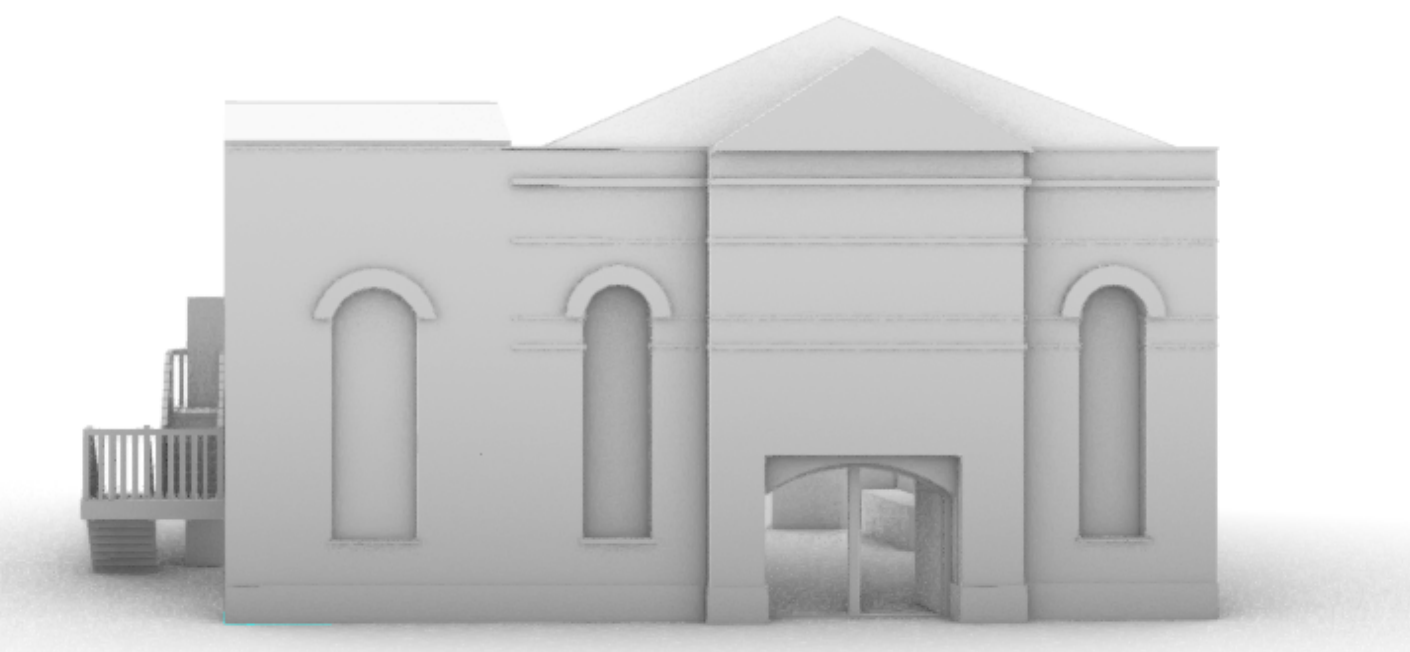
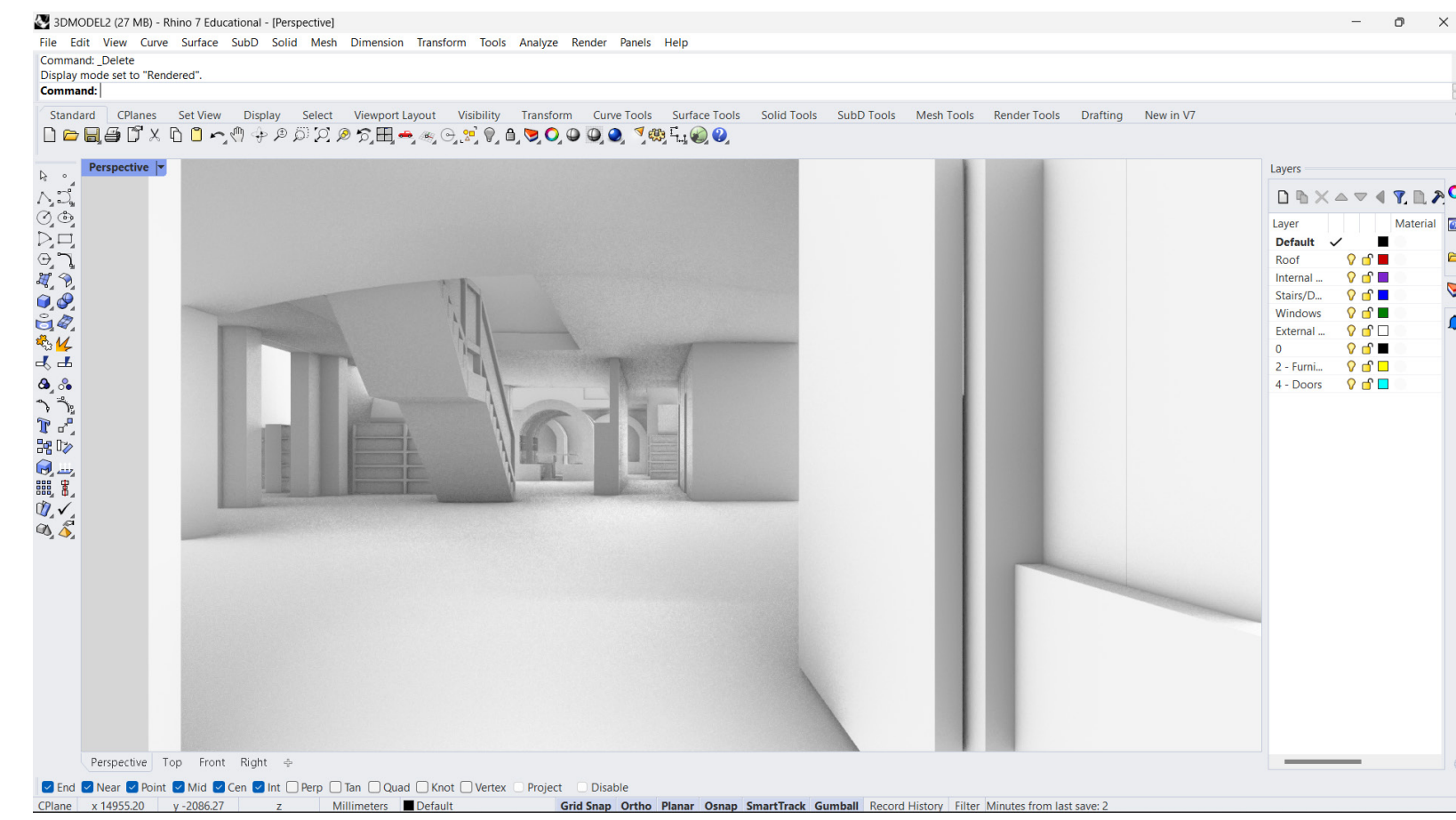
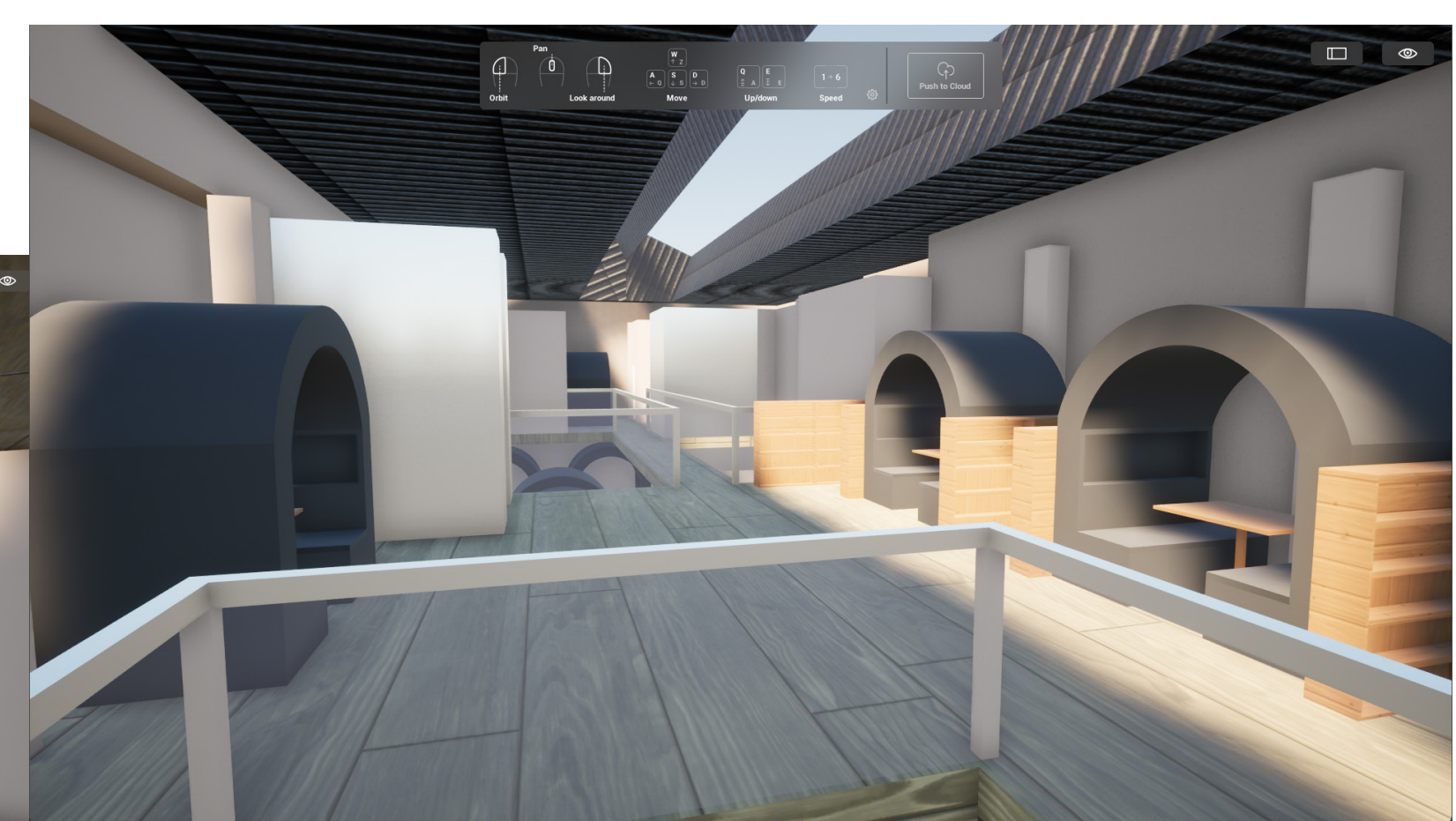
*These are the key spaces that I want to show in my video because I feel as though it helps to explain my direction and design.*



# 3D RHINO MODEL



# 3D TWINMOTION RENDER



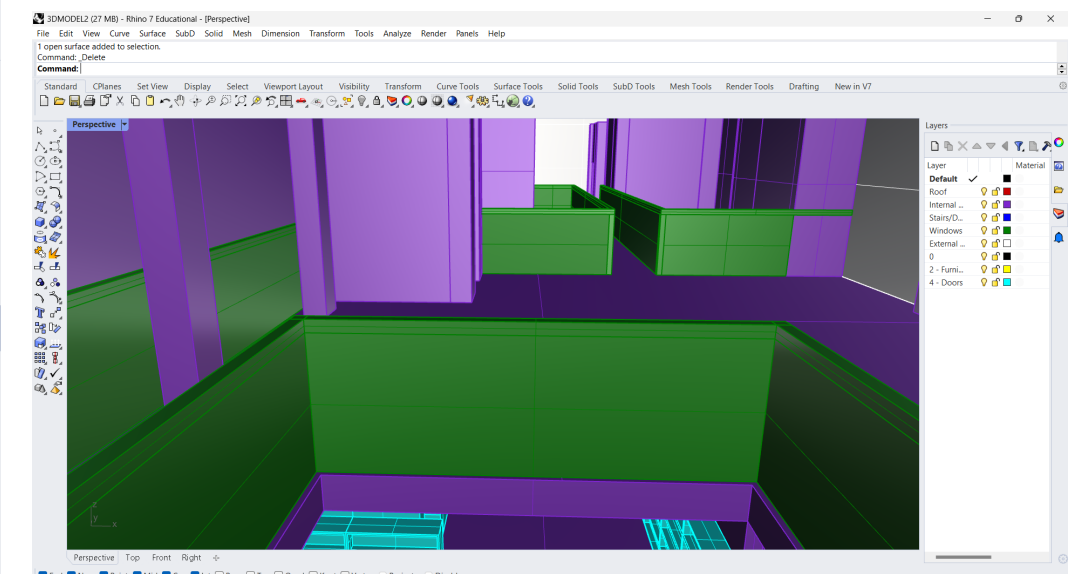
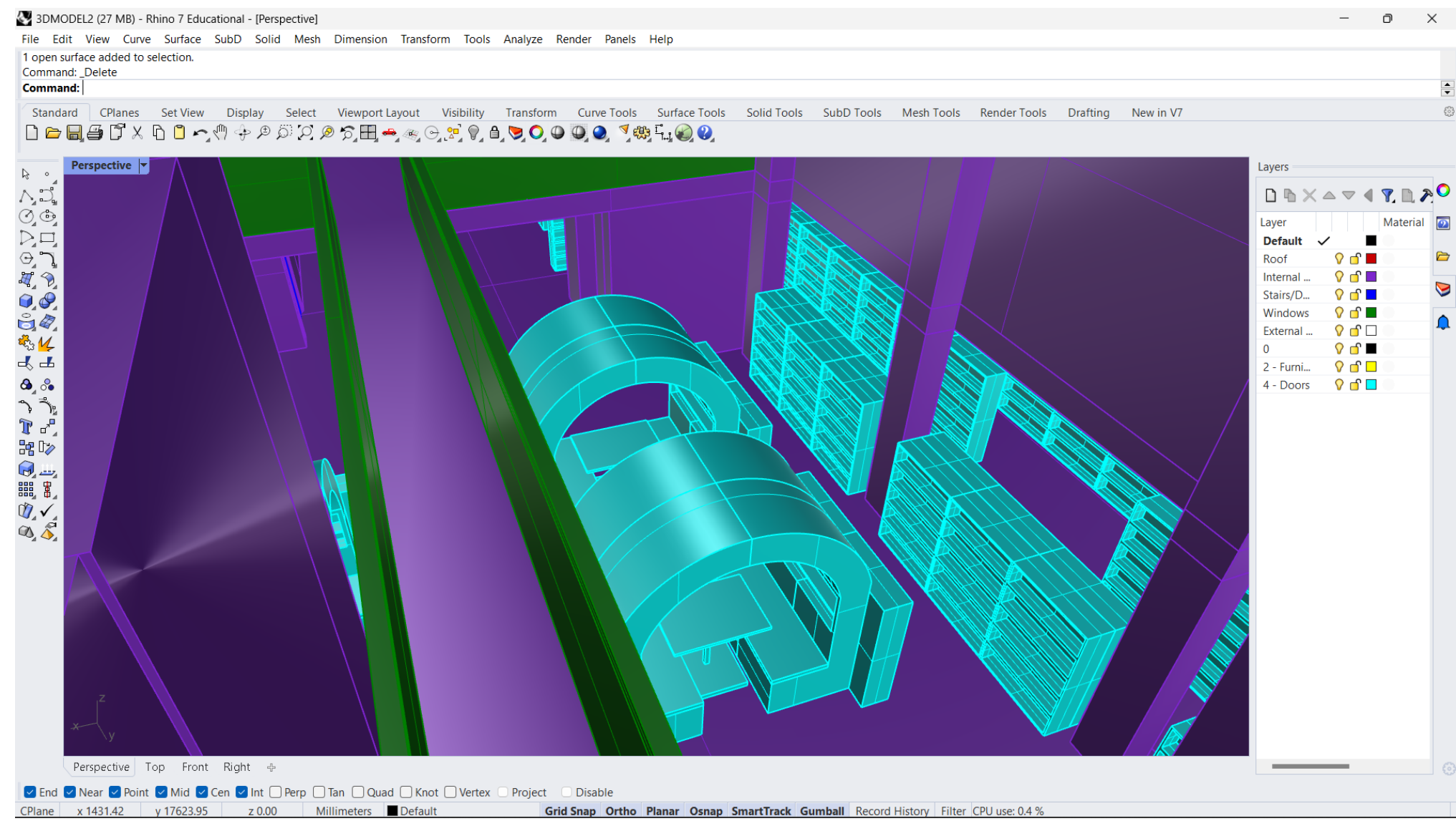
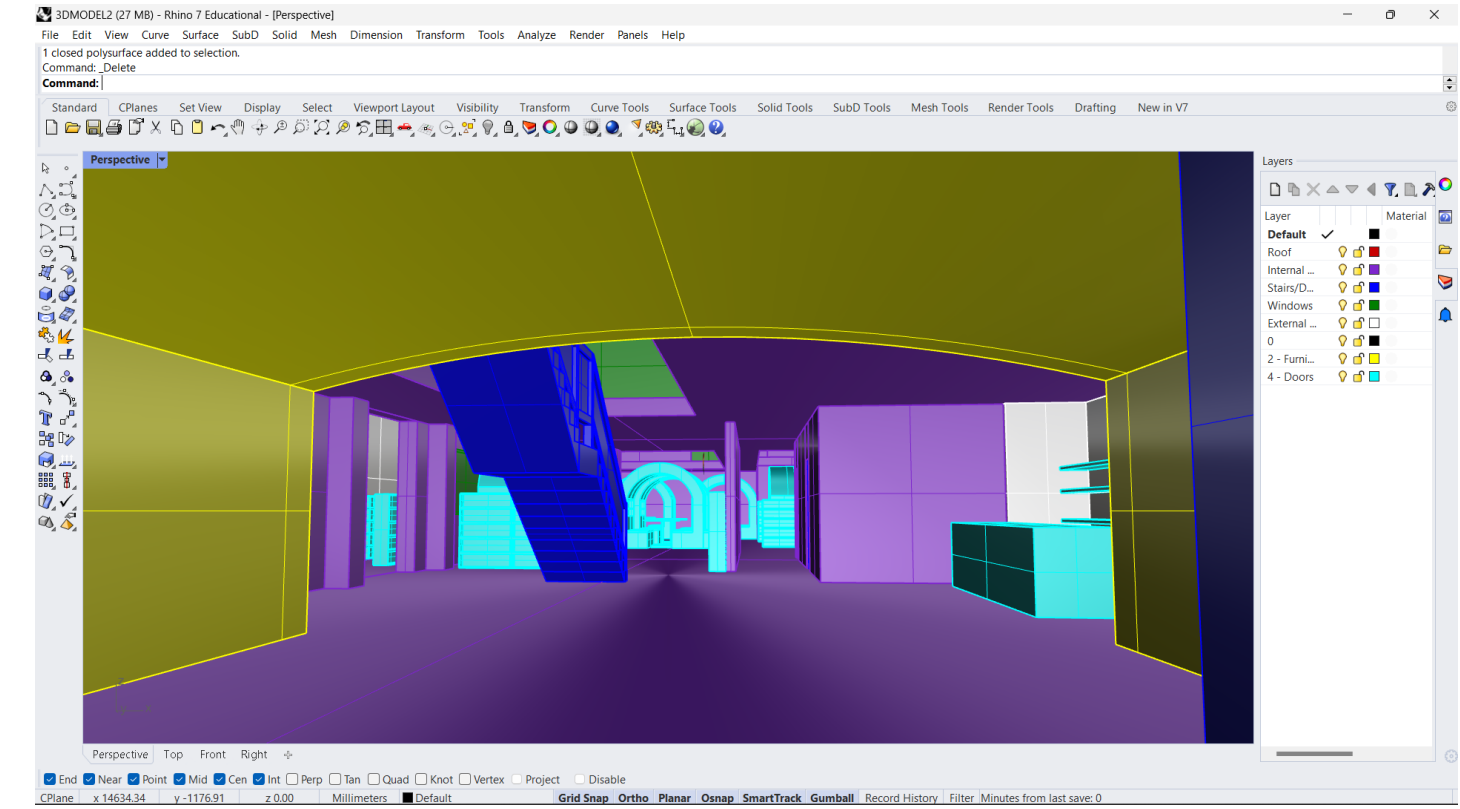
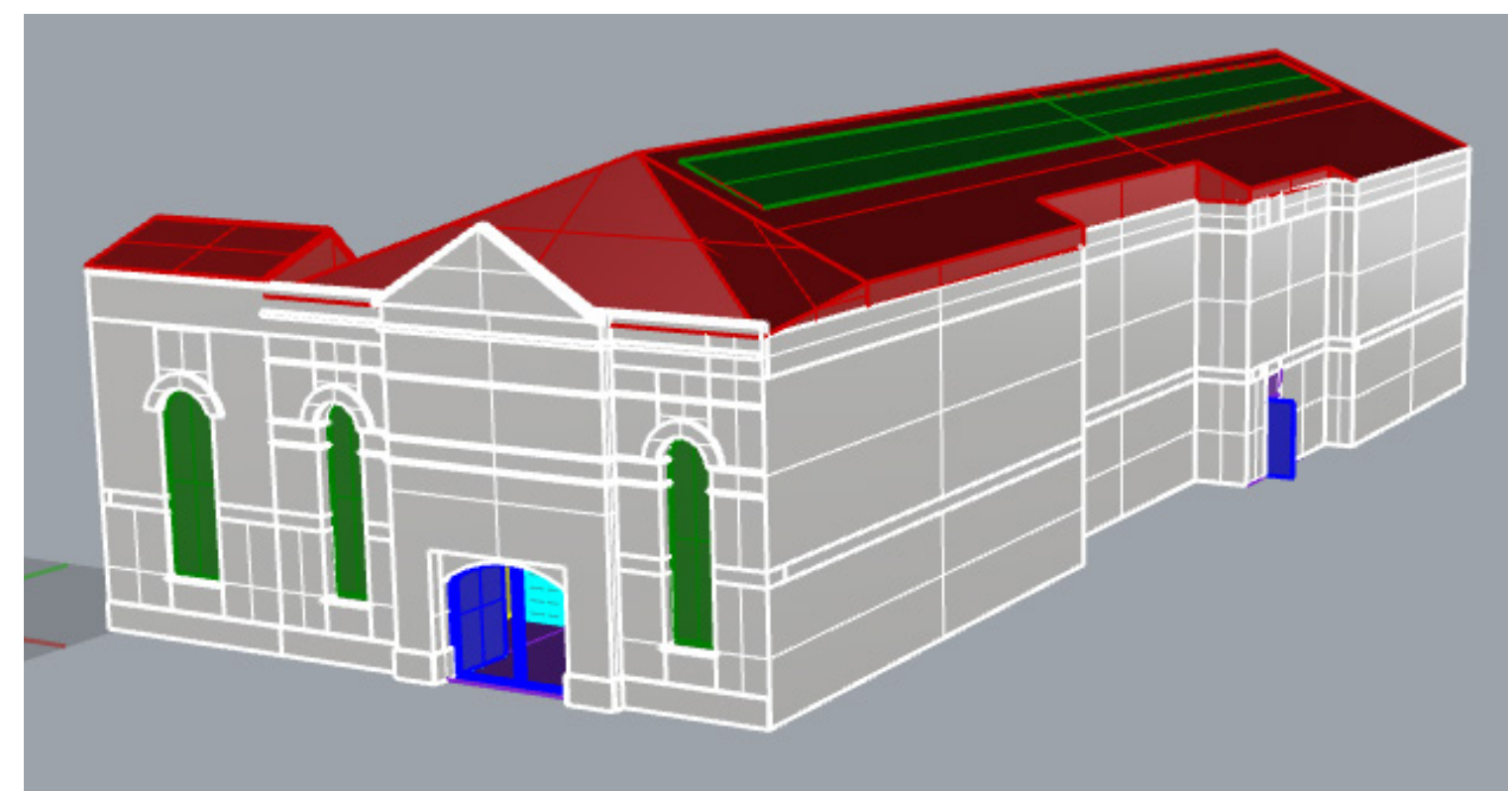
# 2D CAD PLANS



*I am not allowed to change the underlying fabric of the space so I only added a removeable 'Rabbit Hole' in the space. I want it to feel like the customer is walking into the 'Rabbit Hole' as they enter the library.*

*The event will only be taking place downstairs so I have not had to change or add anything on the first floor.*

# 3D RHINO MODEL



## NARRATOLOGY EXERCISE

### PLOT WHAT IS THE STORY ABOUT?

The story is about a young girl called Alice, who falls down a rabbit hole and lands in a fantasy world that is full of weird, wonderful people and animals. The main goal of this story is answering the Caterpillar's question and figuring out the greatest puzzle of all – "who in the world am I?".

### GENRE WHAT STYLE IS THE STORY?

The book is a classic childrens book, but it is also very popular with adults as well. The genre of the book is typically known as literary nonsense genre.

### STRUCTURE

Alice in Wonderland is told in a form of a dream in a third-persons point of view. Because Carroll chose a dream as the structure for his story, he was free to make fun of and satirize the multitudes of standard Victorian didactic maxims in children's literature

### CHARACTERS WHO ARE THE MAIN CHARACTERS AND THEIR ROLES?

Alice is the main character in this story.  
Then comes the White Rabbit who gets her into wonderland.  
The Queen of Hearts as the villan.  
The Cheshire Cat as a guiding spirit to help alice.  
The Caterpillar who introduces the process of her reclaiming her identity by repeatedly asking who she is.

### DEVICES WHAT ARE THE REPEATED ELEMENTS IN THE STORY?

The Caterpillars question of who she is.  
The White Rabbit running around because he is late.  
The Cheshire Cat guiding alice through wonderland.

### SCENES DESCRIBE 3 SCENES IN DETAIL

I am doing 3 scenes from the 1951 animation adaptation of Lewis Carroll's Alice in wonderland.

## 1<sup>ST</sup> SCENE, RABBIT HOLE

As Alice spots a talking white rabbit who is chanting 'I'm late, so late!', she follows said rabbit down a rabbit hole. Unknowing to her, that there is a drop, she falls down the rabbit hole but as she is falling she notices that she is going down very slowly. She sees many different things as she is falling like a land on a table which she then turns on and rocking chair that she sits in and distorted mirror, a grand father clock and many more things she sees while she is falling at a steady pace. She then turns upside down and reaches the bottom, where her feet latch onto a pole which stops her completely. As she is upside down, she sees the white rabbit running of and then takes off after him.



## 2<sup>ND</sup> SCENE, FLOWER GARDEN

As Alice tries and fails to keep up with, he white rabbit, she stumbles upon flowers garden, she is speaking to herself at first about something that she sees but when someone answers Her she looks around not really seeing anyone, so she quickly dismisses. After the second time of being answered back, she looks over at the flowers and laughs to herself thinking that flowers cannot talk. The flower replies that they can and then after that the flowers insist that they sing a song for Alice to describe who and what they are. The flowers amongst themselves have an argument of what flower they should sing about and then in the end they decided to sing the golden afternoo. They sing the song and then after the song they asked Alice what type of flower she is and she cannot answer because she is not a flower so they deduce because of the fact that the white part of her dress has drooped down it makes it look she is a weed and something that should be taken out of the home. They all gang up on her and tell her to go away and then just as she is about to leave the flowers pour water over her leaving her

drenched and very sad.



## 3<sup>RD</sup> SCENE, CATERPILLAR

Alice stumbles upon a Caterpillar who is smoking hookah and singing out the vowels as he puffs out the smoke the letters appear in the air with the smoke. When the Caterpillar notices Alice watching him asks her who she is. Alice replies saying 'I am not entirely sure who I am.' Because she does not give the Caterpillar an answer, he gets annoyed seeing as she can't answer the simple question. While speaking to her he puffs the smoke into her face. Alice gets really annoyed with the caterpillar so she leaves and walks away but then the Caterpillar calls her back and tells her that she he wants to say something else to her. When she comes back she unintentionally insults his height, which makes him really mad, so he puffs loads of smoke until it covers him completely. When the smoke clears up, she notices that he is not there anymore but his gloves, shoes and skin is still there. She then hears a voice up above. The caterpillar has turned into a butterfly, he still is rude and flies away from Alice leaving her all alone.



## VIDEO DESIGN EXERCISE

### PLOT WHAT ARE YOU EXPLAINING?

The journey into the rabbit hole meeting the flowers and the caterpillar. also how you can find yourself through music.

### GENRE WHAT STYLE WILL FIT THE EXPERIENCE YOU DESIGNED?

I want the style to be simple and for there to be a clear understanding of what is happening.

### STRUCTURE WHAT IS YOUT INTRODUCTION, MAIN CONCEPT, CONCLUSION?

My intro will be showing the outside of the building and how it looks colourful with the bushes and the flowers, then it will be walking through the 'rabbit hole' and then seeing the flowers and the caterpillar. My concept is how you can use music to find who you are.

### CHARACTERS WHAT ARE YOUR KEY SPACES, WHAT ARE THEIR ROLES?

My key spaces are the 'Rabbit Hole' and the space after that. I want the 'Rabbit Hole' to show some of the different things that Alice saw as she was falling down including some memrable things from the other characters.

### DEVICES WHAT ARE THE REPEATED ELEMENTS THAT HELP TIE YOUR STORY TOGETHER?

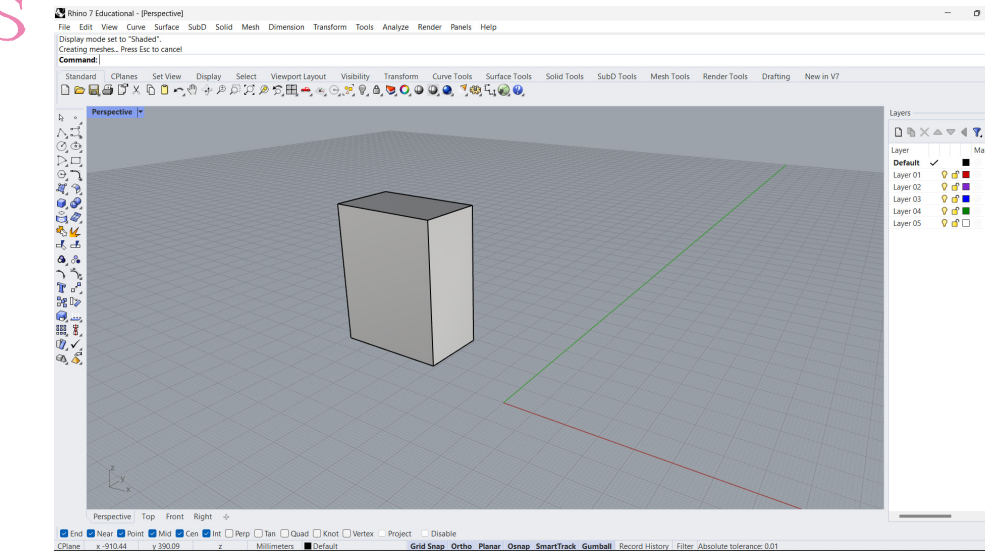
The Caterpillar continously asks Alice whoe she is and that sneds her into thinking who she is. I want to use that question as a way to ask the people who enter the sapce whe they are through music and how they can find themselves through that.

### SCENES HOW DO YOU VISUALLY PRESENT YOUR KEY SPACES?

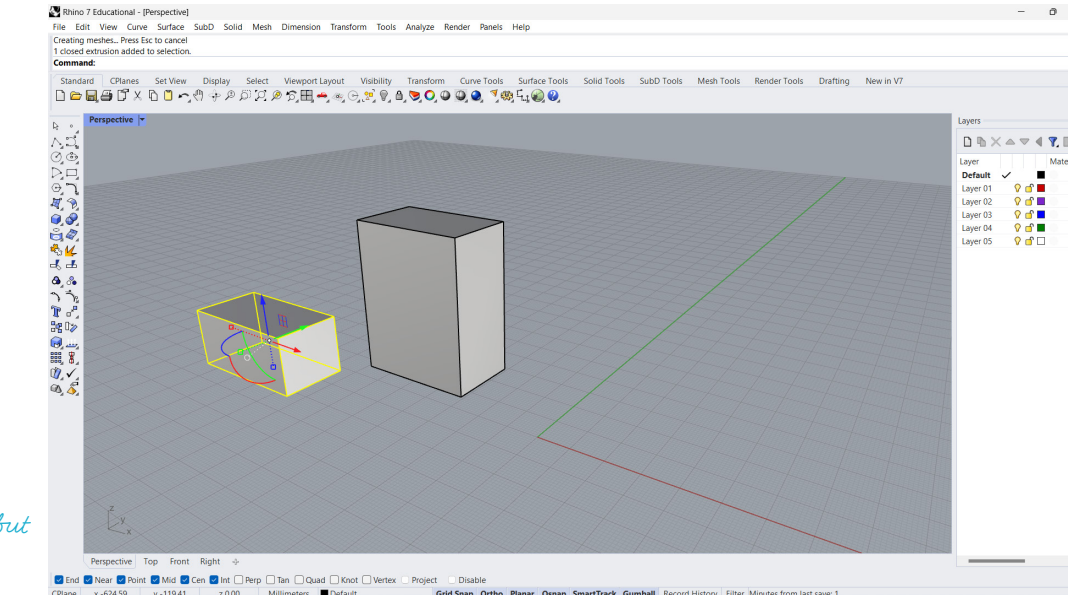
I will be using Rhino, Twinmotion and Premire Rush to formulate a 3D moldel and videos of the design that I have planned.

## RHINO EXPERIMENTS

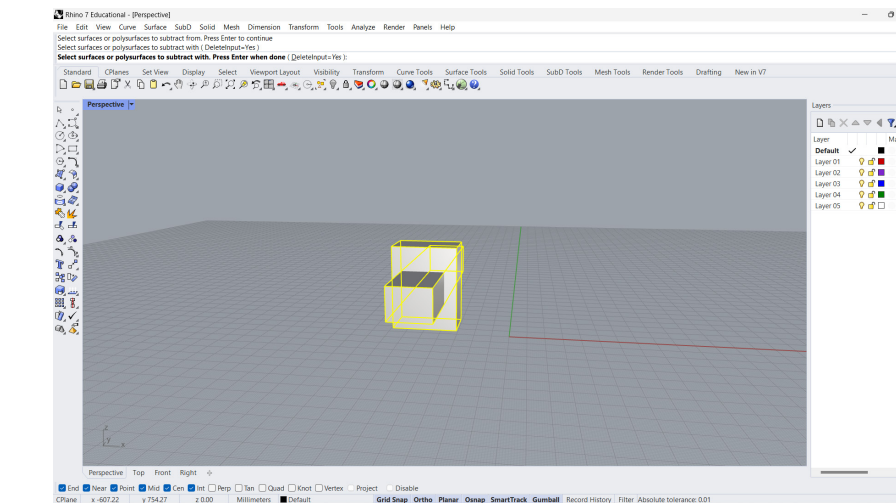
Here I am just palying around with the different tools in Rhino.



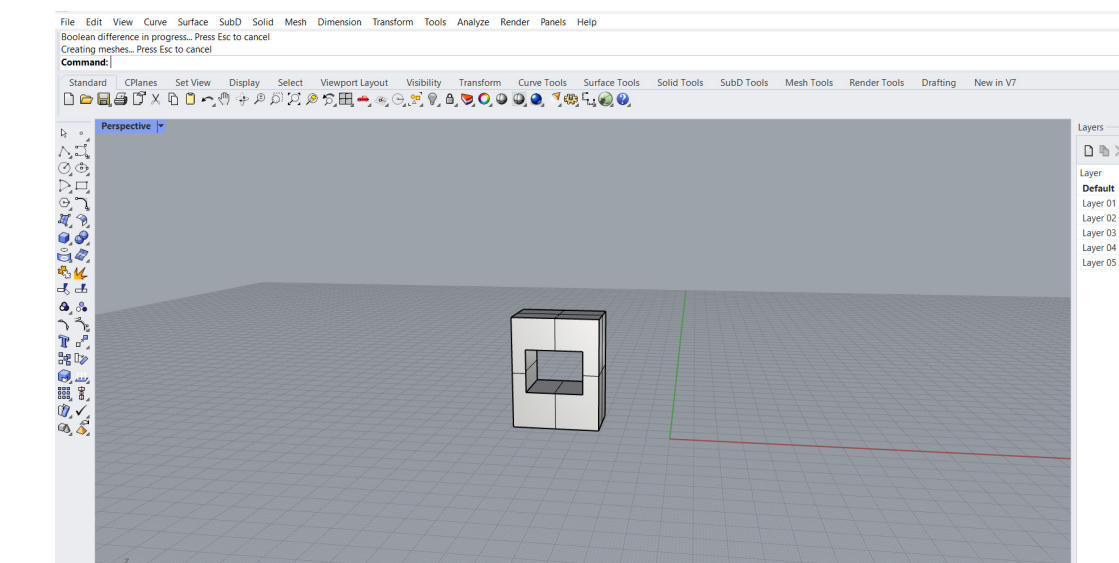
I started of with a simple extruded rectangel



I then created another one but a bit smaller



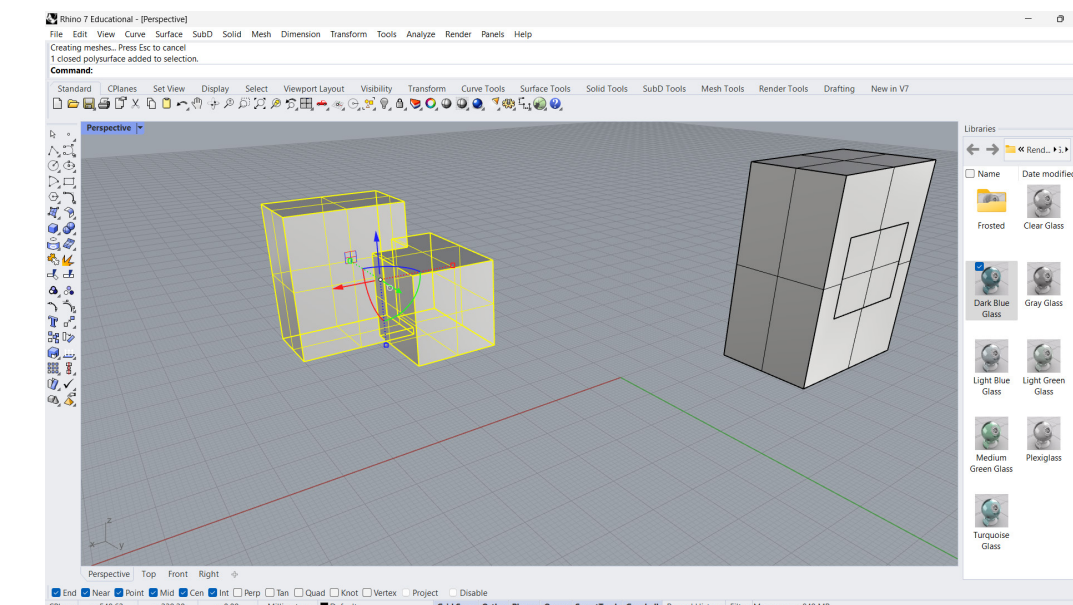
Using the gumball tool i moved the smaller extrusion so that it goes through the first shape



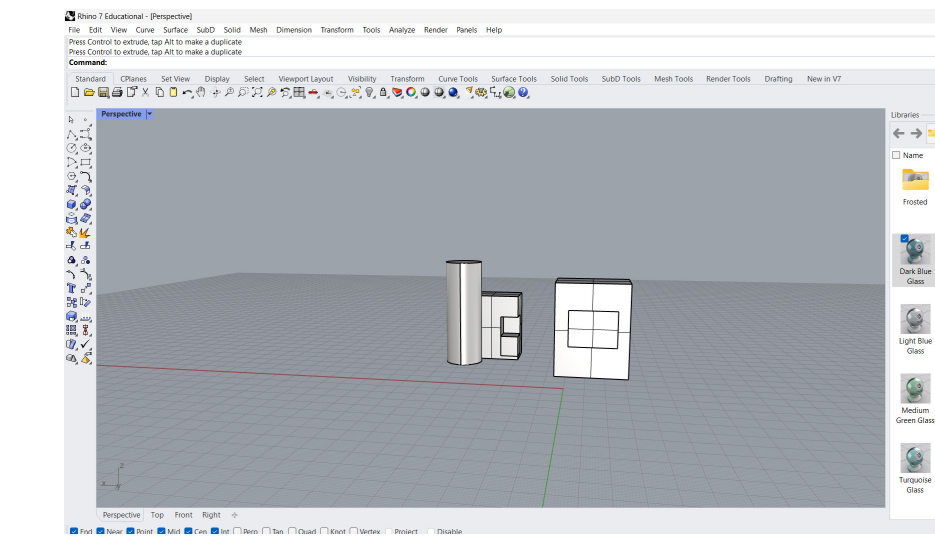
With the boolean difference tool i can cut out the shape of the smaller extrusion straight through the other shape

I now have another two shapes of different sizes but instead of putting the smaller shape through the big one i am putting it to the side

I used planarsurf to close the opening so that i can render it in twinmotion



I once again used the boolean difference tool then extruded the gap and i also added an extra shape



YOU ARE INVITED TO  
LEWIS CARROL'S

# ALICE

*in*

WONDERLAND

*Book Launch*

WEDNESDAY 18TH

JANUARY 2023

9:00 AM - 10:00 PM

*Where to find us-*

321-314 BRADFORD  
STREET B5 6ET